



Wisconsin Center for Education Research

SCHOOL OF EDUCATION

UNIVERSITY OF WISCONSIN-MADISON

Community Schools

Brooke Parfrey and Zachary Marks

What is a Community School?

- Attempt to provide a more holistic approach by being a hub of resources
- Difference between *Community Schools* (CS) and *community schools* (cs)
- Very hard to analyze quantitatively
- Great value partnerships and trust



Leadership and Partnership

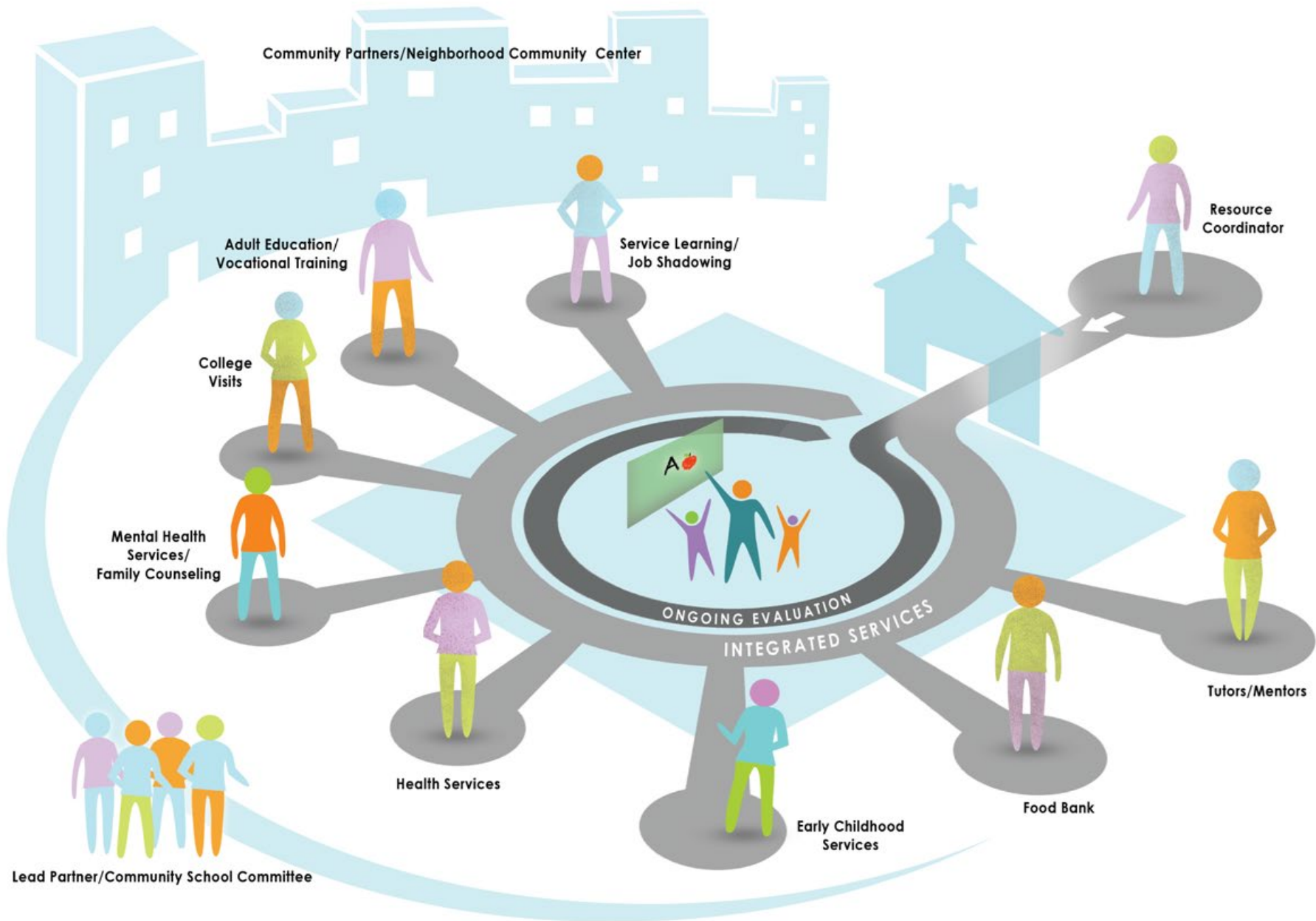


- Effective partnerships address both:
 - Community needs
 - Educational needs
- Appropriate leaders
 - Community trust
 - Community understanding

Trust and the Community

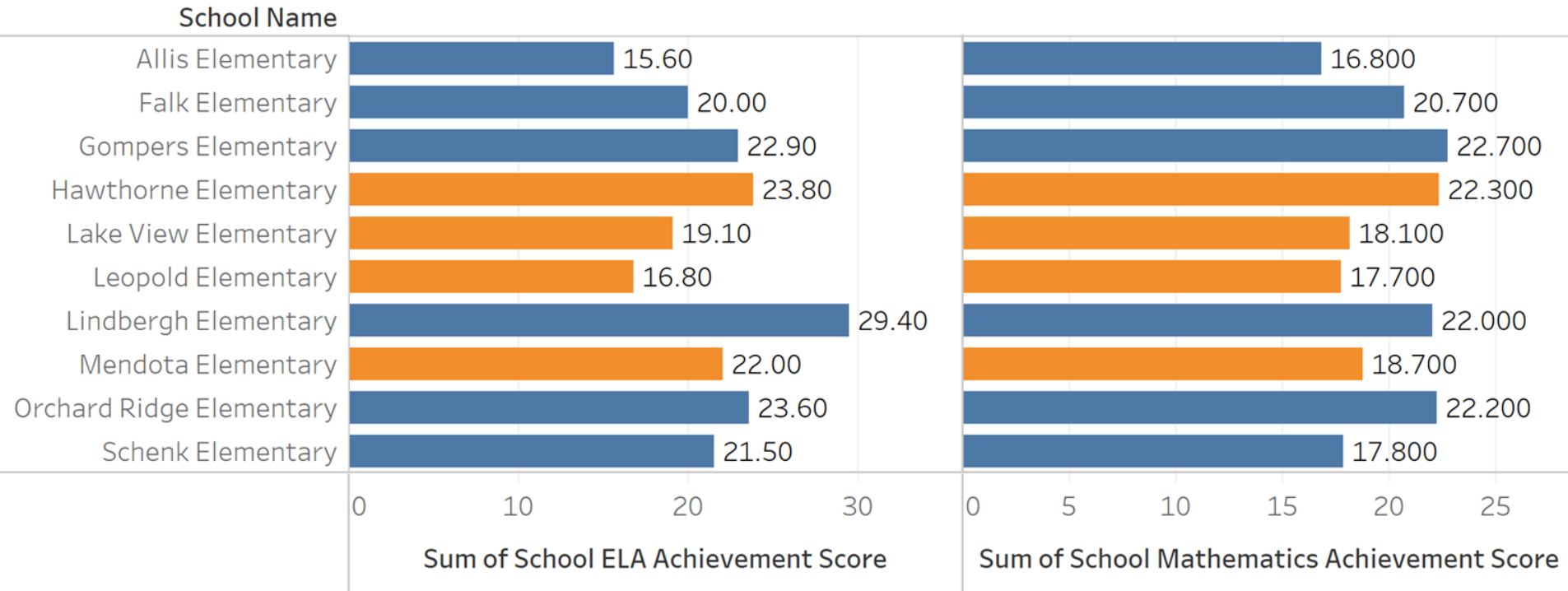
- Trust from partnerships, students, parents, and community members is vital
- Oftentimes CSs can create trust between the community and the school
- This trust is fragile





Academic Achievement

Figure 2



School Name (group) 1

■ Hawthorne Elementary, Lake View Elementary, Leopold Elementary and 1 more

■ Other

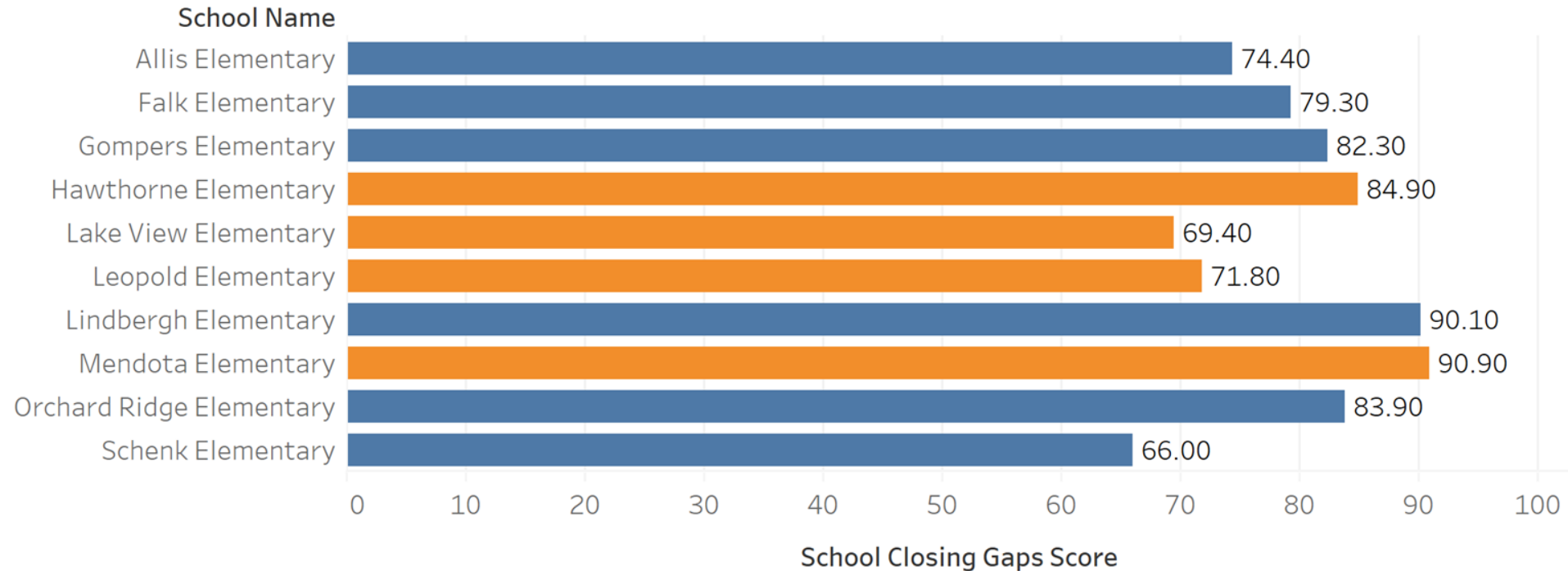


**Wisconsin Center for
Education Research**

SCHOOL OF EDUCATION
UNIVERSITY OF WISCONSIN-MADISON

Academic Achievement

Figure 3



School Name (group) 1

■ Hawthorne Elementary, Lake View Elementary, Leopold Elementary and 1 more

■ Other



Wisconsin Center for
Education Research

SCHOOL OF EDUCATION
UNIVERSITY OF WISCONSIN-MADISON



Discussion



- Not for all districts
- Must be very intentional if started
- More data required
- Recent implementation
- Many potential benefits